

CHICAGO COIN

RIVIERA

(MODEL 426)

PARTS CATALOG

CHICAGO DYNAMIC INDUSTRIES, INC.

1725 DIVERSEY BOULEVARD CHICAGO, ILLINOIS 60614 PHONE (312) 935-4600

INTRODUCTION

THIS PARTS CATALOGUE HAS BEEN COMPILED TO HELP THE SERVICEMAN
IN SELECTING THE PARTS NECESSARY FOR PROPER MAINTENANCE OF
CHICAGO COIN GAMES.

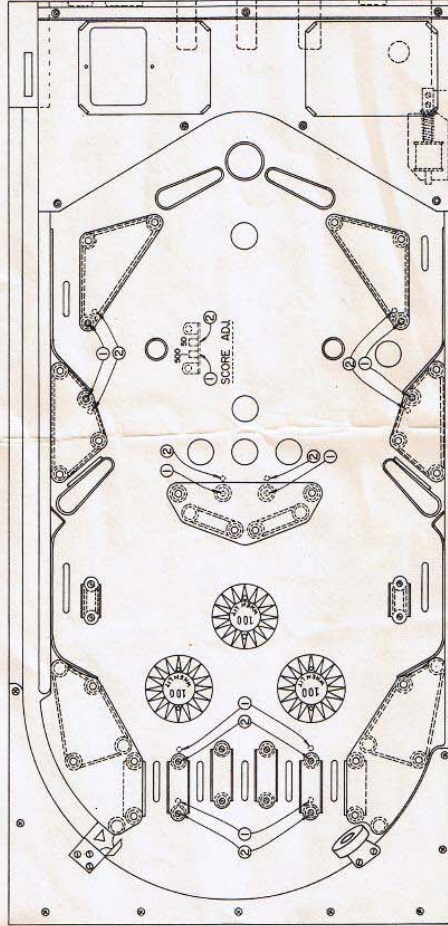
ALL MOTORS IN NEW CHICAGO COIN GAMES CARRY A 6 MONTHS WARRANTY
FROM DATE OF PURCHASE OF MACHINE.

ANY DEFECTIVE MOTOR WILL BE REPLACED FREE OF CHARGE BY YOUR
CHICAGO COIN DISTRIBUTOR.

WHEN ORDERING PARTS ALWAYS SPECIFY NAME OF UNIT, PART NUMBERS
AND A DESCRIPTION OF THE PART AS SHOWN IN THIS CATALOGUE.

CHICAGO DYNAMIC INDUSTRIES
PARTS CATALOG

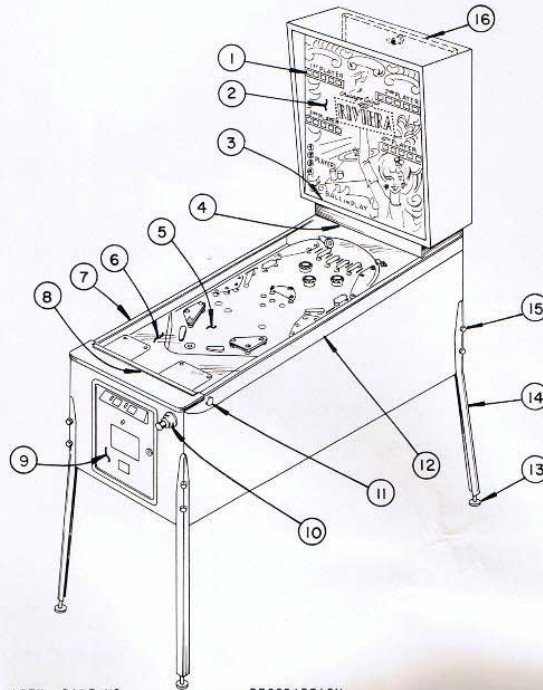
PAGE 1



PLAYFIELD POST AND SCORE
ADJUSTMENTS

NORMAL 1
CONSERVATIVE 2

CABINET COMPLETE

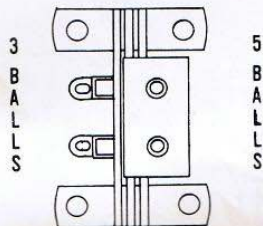
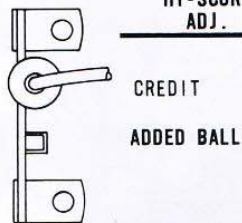


ITEM	PART NO.	DESCRIPTION
1		SCORING DRUM UNITS (SEE PAGE 28)
2	426-350	BACKRACK GLASS (3/16" x 26 1/2" x 25 1/2")
3	344-506-C	GLASS LIFT CHANNEL
	344-800-T	PLASTIC GLASS CHANNEL (TOP)
	344-800-V	PLASTIC GLASS CHANNEL (TWO SIDES)
4	295-536	GLASS BACK SPACER
	295-537	GLASS TOP BACK ARCH
5		TOP OF PLAYFIELD (SEE PAGE 8)
6	#6550-T	TOP GLASS (21" x 43" x 3/16")
7	326-539-L	GLASS CHANNEL COVER
8		FRONT MOLDING (SEE PAGE 6)
9		CASH DOOR & COMPARTMENT (SEE PAGES 4 & 5)
	326-540	CASH BOX
	326-542	CASH BOX SEPARATOR (USED WITH 10¢ & 25¢ ASS'Y)
	339-508-BC	CASH BOX COVER (USED WITH 10¢ & 25¢ ASS'Y)
10		SHOOTER ASS'Y (SEE PAGE 6)
11	308-1501	FLIPPER BUTTON
	#16527	FLIPPER BUTTON BUSHING
12	326-539-L	GLASS CHANNEL COVER
13	#6851	LEG LEVELER
14	291-2501-B	METAL CABINET LEG ASS'Y
15		3/6-16 x 2 1/2" LG. HEX HD BOLTS
16	393-501	BACK DOOR

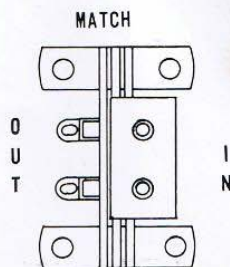
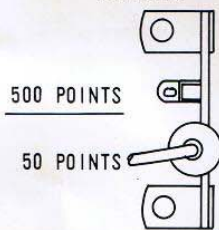
CHICAGO DYNAMIC INDUSTRIES

PARTS CATALOG

PAGE 2

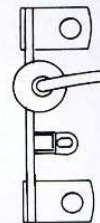
ADJUSTMENTSHI-SCORE
ADJ.

SCORE ADJ.
FOR
TARGET SWITCHES
AND
TOP ROLL-OVER
SWITCHES

PLAYFIELD
ACTION ADJ.

NORMAL

STRONGER

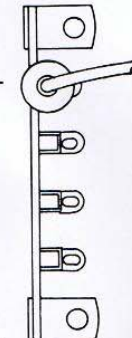
25¢ CHUTE
ADJUSTMENT

2 PLAYS

3 PLAYS

4 PLAYS

5 PLAYS

HI-SCORE POINT ADJUSTMENT

INSERT PLUGS INTO SOCKET AT DESIRED POSITIONS

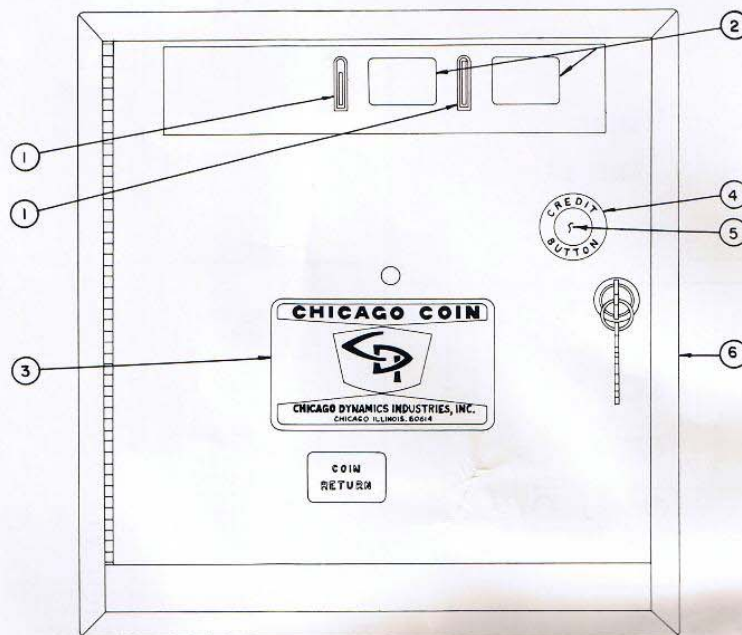
	PLUGS	SOCKET
(31000 TO 40000) - WHITE-		6000- <input type="checkbox"/> <input type="checkbox"/> -1000
(41000 TO 50000) - BLUE-		7000- <input type="checkbox"/> <input type="checkbox"/> -2000
(51000 TO 60000) - GREEN-		8000- <input type="checkbox"/> <input type="checkbox"/> -3000
(61000 TO 70000) -PURPLE-		9000- <input type="checkbox"/> <input type="checkbox"/> -4000
(71000 TO 80000) - RED-		0000- <input type="checkbox"/> <input type="checkbox"/> -5000
(81000 TO 90000) -YELLOW-		
(91000 TO 99000) -ORANGE-		

EXAMPLE:

WHITE WIRE INTO 1000 POSITION SCORES AT 31000

WHITE WIRE INTO 0000 POSITION SCORES AT 40000

CASH COMPARTMENT



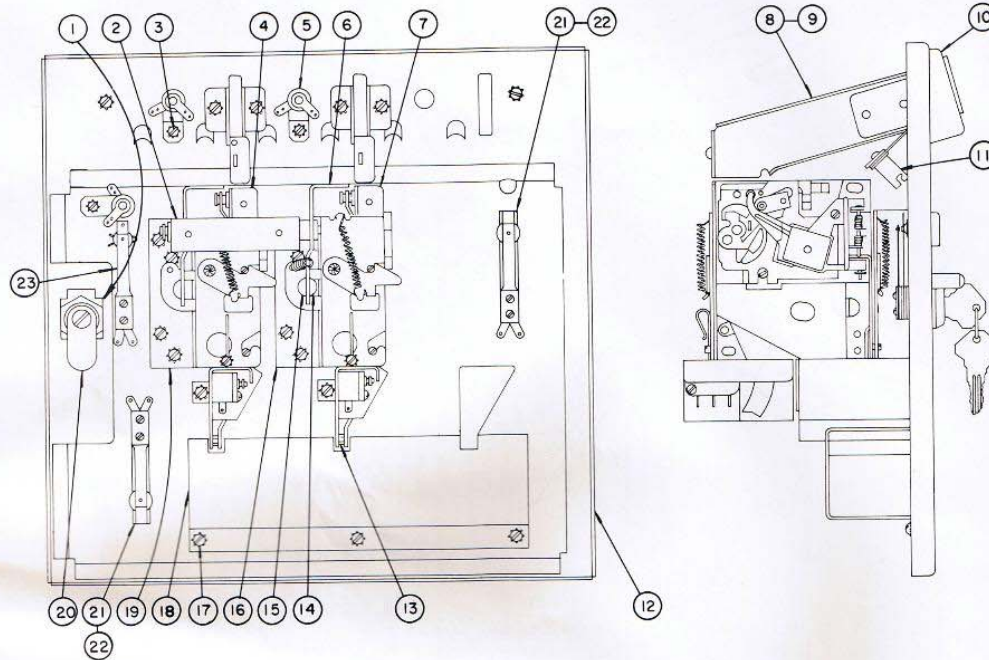
ITEM	PART NO.	DESCRIPTION
1	382-800	COIN ENTRY MOLDING (SEE PAGE 33)
2		COIN DENOMINATION WINDOW (SEE PAGE 33)
3	#6883	C.D.I. DECAL
4	354-305	CREDIT DECAL
5	382-1500-R	CREDIT BUTTON
6	384-2502	FRONT DOOR FRAME ASS'Y

CHICAGO DYNAMIC INDUSTRIES

PARTS CATALOG

PAGE 4

CASH COMPARTMENT DOOR



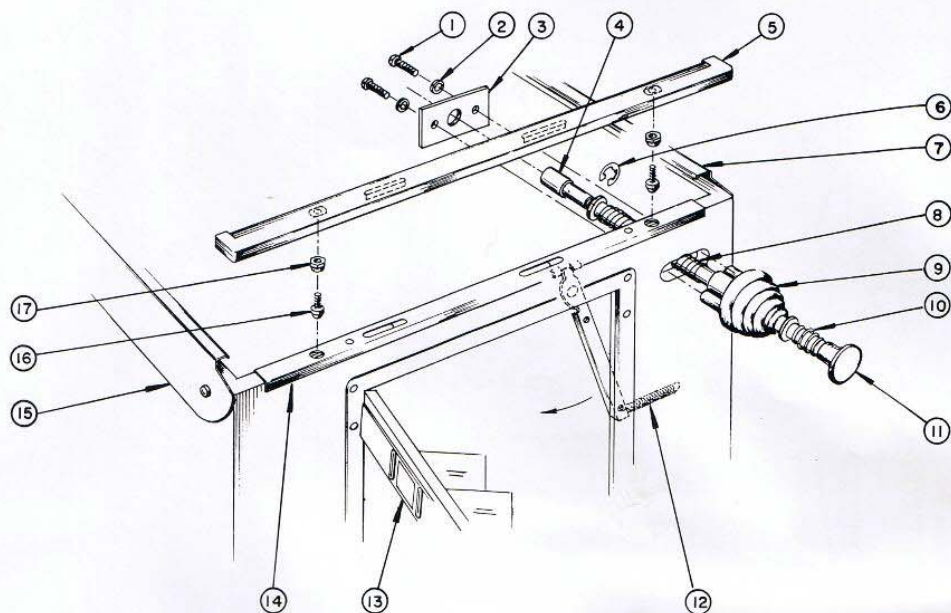
ITEM	PART NO.	DESCRIPTION	ITEM	PART NO.	DESCRIPTION
	382-2505-S	COMPLETE FRONT DOOR ASSEMBLY	13	333-2528	REJECTED COIN CONCUR FUNNEL ASS'Y
1	246-551	LOCK PLATE	14	326-1505	REJECTOR ROD
2	326-521	REJECTOR BRACKET	15	#6828-37	RETAINING RING
3		#6-32 x 1/4 LG. SEMS UNIT	16	333-2530-S-A	HOUSING, MICRO SW. & COIN LOCK OUT
4	#6801-C	25¢ COIN ACCEPTOR INSERT			COIL ASSEMBLY (248-301 COIL)
5	#5266	BAYONET SOCKET	326-2522		HOUSING SHELL ASSEMBLY (326-2522-S
	#5211	BULB			WITH COIN LOCK OUT COIL MOUNTED)
6	326-2510	REJECTOR ARM & BUSHING ASS'Y	17		#8-32 x 1/4 LG. SEMS UNIT
	#5303	WASHER	18	326-2527	COIN RETURN HOUSING ASS'Y
	#6722-18	RETAINING RING	19	333-2530-S-C	HOUSING, MICRO SW. & COIN LOCK OUT
7	#6801-B	10¢ COIN ACCEPTOR INSERT			COIL ASSEMBLY (248-301 COIL)
8	382-2501	COIN GUIDE ASSEMBLY	326-2522		HOUSING SHELL ASSEMBLY (326-2522-S
9	382-2502	COIN GUIDE COVER ASS'Y			WITH COIN LOCK OUT COIL MOUNTED)
	382-2502-A	COIN GUIDE COVER ASS'Y FOR 25¢	20	#6877-A	LOCK CAM
		COIN ACCEPTOR ONLY		#6719	LOCK
10	382-2504-B-C	COIN WINDOW BRACKET ASS'Y	21	#220	SWITCH ASSEMBLY
11	#5265	BAYONET SOCKET	22	326-544-A	ANTI-GROUNDING FINGER
12	382-2507-X	FRONT DOOR & REINFORCEMENT ASSEMBLY	23	#362	SWITCH ASSEMBLY

CHICAGO DYNAMIC INDUSTRIES

PARTS CATALOG

PAGE 5

FRONT MOLDING & SHOOTER ASSEMBLY



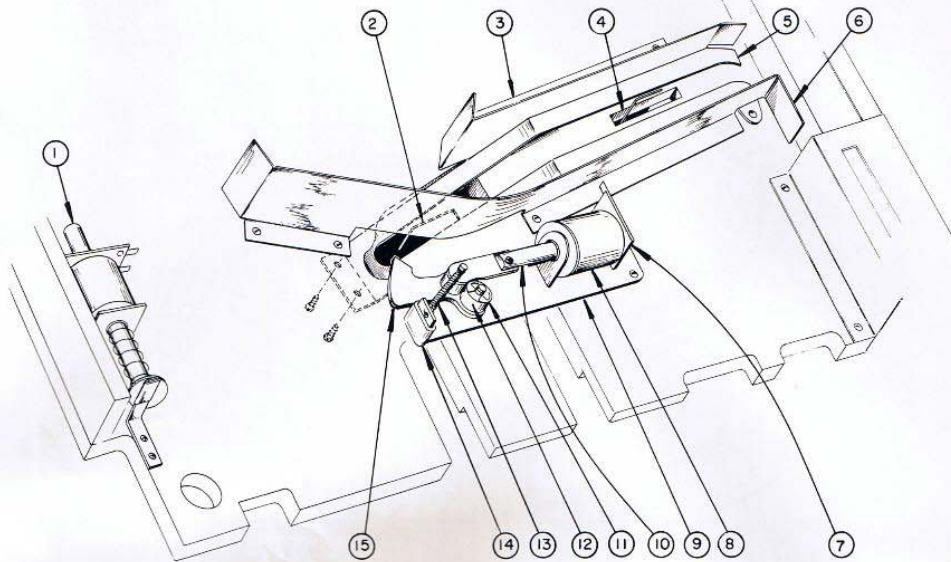
ITEM	PART NO.	DESCRIPTION
1		#10-32 x 1-1/8 LG. R.H.M.S.
2	#5478	EXTERNAL SHAKEPROOF LOCKWASHER
3	308-500	PLUNGER BUSHING MTG. BRKT.
4	#6086	PLUNGER TIP
5	339-2516	FRONT MOLDING ASS'Y
6	#6722-37	RETAINING RING
7	326-539-R	GLASS CHANNEL COVER
8	295-903	SHOOTER TENSION SPRING
9	#16519-W	BALL SHOOTER HOUSING
10	295-902	SHOOTER CHECK SPRING
11	326-2505	SHOOTER ROD ASS'Y
12	250-900	RETRACTION SPRING
13		CASH COMPARTMENT DOOR (SEE PAGES 4 & 5)
14	393-2503	FRONT MOLDING LOCK ASS'Y
15	326-539-L	GLASS CHANNEL COVER
16	326-1500	FRONT MOLDING ADJUSTING SCREW
17	326-1501	FRONT MOLDING LOCK NUT

CHICAGO DYNAMIC INDUSTRIES

PARTS CATALOG

PAGE 6

BALL EJECTOR UNIT



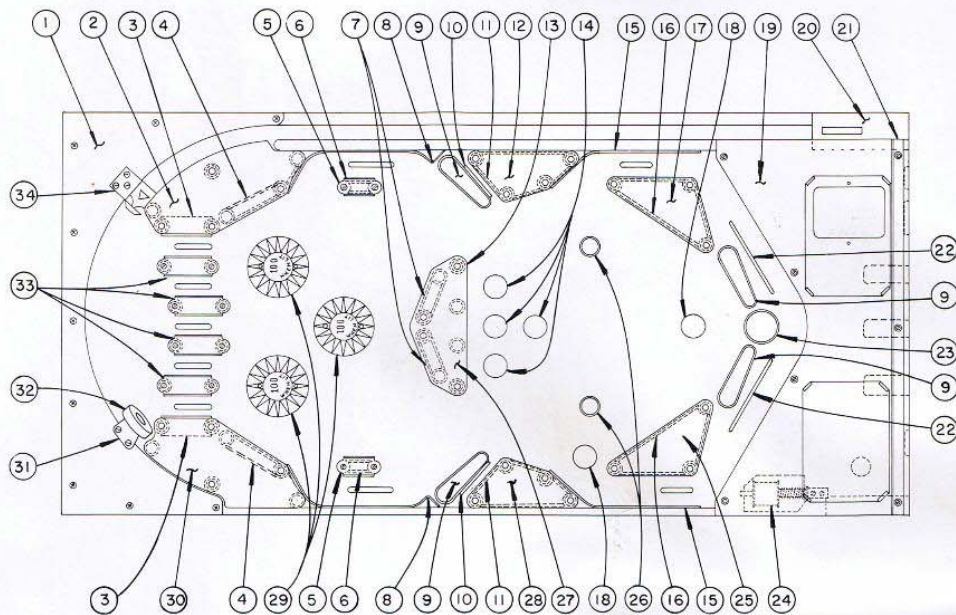
ITEM	PART NO.	DESCRIPTION
1		LEFT HAND BALL RETURN UNIT (SEE PAGE 10)
2	326-904	BALL EJECTOR WIRE FORM
3	326-512	UPPER BALL RETURN GUIDE RAIL
4	326-905	BALL COUNT WIRE FORM
5	326-508	BALL RETURN RUNWAY
6	326-513	LOWER BALL RETURN GUIDE RAIL
7	130-2516	PLUNGER STOP ASS'Y
8	J-22-550	COIL COMPLETE
	130-1535	SOLENOID TUBING
9	326-2519	BALL EJECTOR MTG. PLATE & STUD ASS'Y
10	366-2506	PLUNGER & LINK ASS'Y
11	#6722	RETAINING RING
12	#5373	WASHER
13	326-902	PLUNGER RETURN SPRING
14	326-302	PLASTIC SLEEVE
15	366-2504	BALL EJECTOR ARM ASS'Y

CHICAGO DYNAMIC INDUSTRIES

PARTS CATALOG

PAGE 7

TOP OF PLAYFIELD



ITEM	PART NO.	DESCRIPTION	ITEM	PART NO.	DESCRIPTION
1	393-513	METAL ARCH TOP (PAINTED)	19	426-503-S	INSTRUCTION PLATE
2	295-514	METAL ARCH BOTTOM	20	426-504-S	SHOOTER INDICATOR
3	426-300-B	PLAYFIELD LIGHT SHIELD (*)	21	326-522	PLAYFIELD GLASS SUPPORT
4	#16537-Y	2 1/2" CUT GUIDE RAIL (YELLOW)	22	409-903-C	WIRE FORM
5	#6063	2" DIA. RUBBER RING	23		BALL SAVER ASS'Y (SEE PAGE 11)
6	#16503-R	1 1/2" GUIDE RAIL (RED)	24		LEFT HAND BALL RETURN (SEE PAGE 10)
7	#6051	1" DIA. RUBBER RING	25	426-300-A	PLAYFIELD LIGHT SHIELD (*)
8	#6052	1 1/2" DIA. RUBBER RING	26		ROLL OVER BUTTON ASS'Y (SEE PAGE 12) (SEE PAGE 12)
9	426-500	REAR GUIDE RAIL	27	426-300-E	PLAYFIELD LIGHT SHIELD (*)
10	409-903-A	FLIPPER ASS'Y (SEE PAGE 9)	28	426-300-D	PLAYFIELD LIGHT SHIELD (*)
11	409-903-A	WIRE FORM	29	361-2521	THUMPER BUMPER ASS'Y (SEE PAGE 13)
12	#6056	3" RUBBER RING	30	426-300-F	PLAYFIELD LIGHT SHIELD (*)
13	426-300-C	PLAYFIELD LIGHT SHIELD (*)	31	141-2510	REBOUND BRACKET ASS'Y
14	#16533-W	PLASTIC POST	32	#6016	REBOUND RUBBER
15	326-1507	ACETATE COVER MTG POST	33	#16502-Y	2 1/2" GUIDE RAIL
16	#6050	3/8" DIA. RUBBER RING	34	231-2517	BALL GATE ASS'Y
17	#16517-Y	1 3/16" DIA. PANEL INSERT			
18	426-501	FRONT GUIDE RAIL			
19	#6054	3 1/2" DIA. RUBBER RING			
20	426-300-B	PLAYFIELD LIGHT SHIELD (*)			
21	#16528-R	1" DIA. PANEL INSERT			

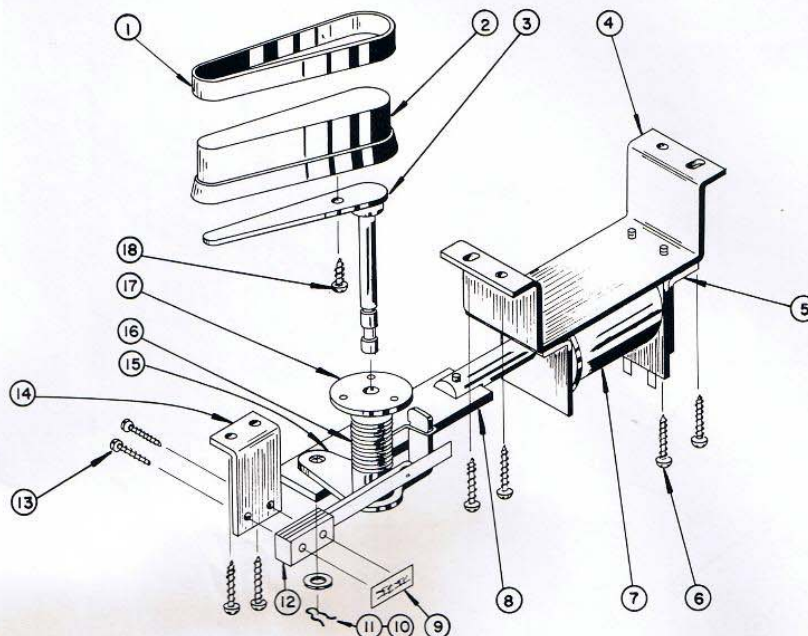
(*) MOUNTED WITH #6885 PUSH NUT FASTENERS

CHICAGO DYNAMIC INDUSTRIES

PARTS CATALOG

PAGE 8

FLIPPER ASSEMBLY



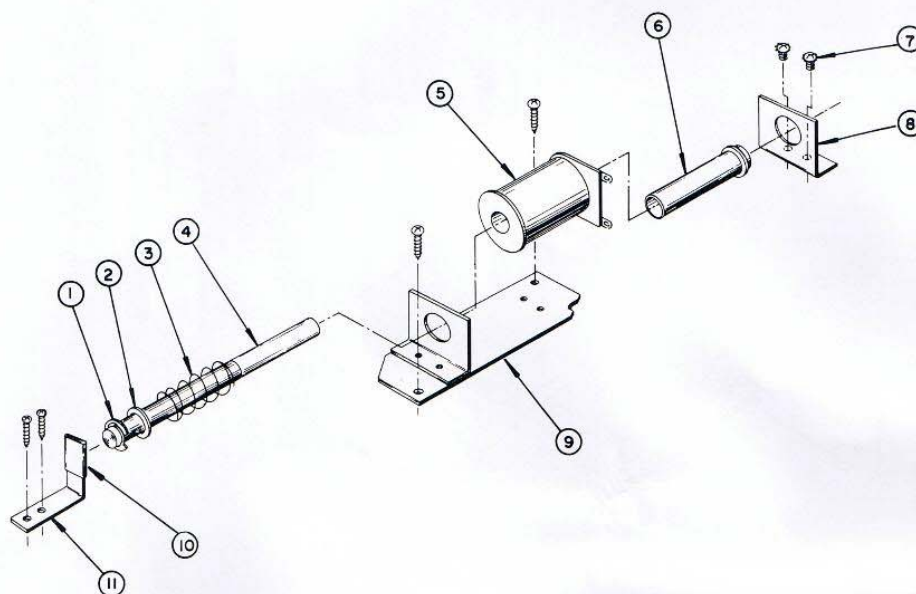
ITEM	PART NO.	DESCRIPTION
1	#6064	FLIPPER RUBBER RING
2	#16550	3\" FLIPPER
3	393-2501	FLIPPER PLATE & SHAFT ASS'Y
4	347-2511	FLIPPER COIL MTG. BRACKET ASS'Y
5	347-2512	PLUNGER STOP ASS'Y
6		#8 x 1/2 LG. RD. PHILLIPS HD. S.M.S.
7	FJ-29-400	COIL COMPLETE
	31-375	
	130-805	SOLENOID TUBING
8	393-2504	FLIPPER PLUNGER & OPERATING LINK ASS'Y
9	#6770	TINNERMAN NUT
10	#5357	WASHER
11	91-905	SPRING CLIP
12	#294-AR	CONTACT ASS'Y (SHOWN)
	#294-AL	CONTACT ASS'Y
13		#4 S.M.S. (LENGTH AS REQUIRED)
14	295-559	CONTACT MTG. BRACKET
15	231-2536-L	LEFT FLIPPER ARM ASS'Y
	231-2536-R	RIGHT FLIPPER ARM ASS'Y
16	231-905-B	RIGHT HAND SPRING (SHOWN)
	231-905-A	LEFT HAND SPRING
17	#16508-W	FLIPPER BUSHING
18		#6 x 7/16 LG. TYPE "L" SELF TAPPING SCREW

CHICAGO DYNAMIC INDUSTRIES

PARTS CATALOG

PAGE 9

LEFT HAND BALL RETURN



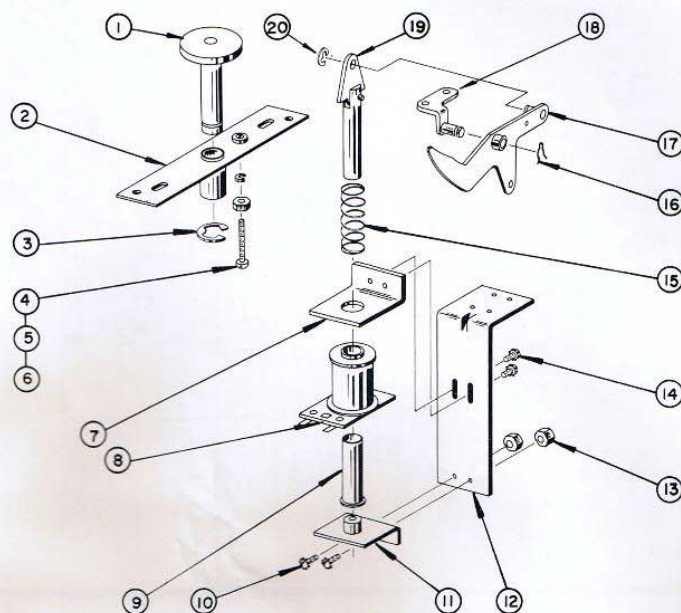
ITEM	PART NO.	DESCRIPTION
1	#6722-43	RETAINING RING
2	#5369	WASHER
3	208-901	SPRING
4	393-2506	PLUNGER & TIP ASS'Y
5	J-22-550	COIL COMPLETE
6	167-800-A	SOLENOID TUBING
7		#6-32 x 3/16 LG. SEMS UNIT
8	347-505	COIL MTG. BRACKET
9	360-2528-A	RESET COIL & SUPPORT BRKT. ASS'Y
10	#6527	PLASTIC SLEEVE (3/4" LG.)
11	295-530-A	PLAYFIELD CONTACT BRACKET

CHICAGO DYNAMIC INDUSTRIES

PARTS CATALOG

PAGE 10

BALL SAVER



ITEM	PART NO.	DESCRIPTION
1	361-2501-A	BALL STOP & SHAFT ASS'Y
2	361-2502	BALL STOP MTG. BRACKET ASS'Y
3	#6722-50	RETAINING RING
4		#8-32 x 1-1/8 LG. R.H.M.S.
5		#8-32 HEX NUT
6	#5427	SPLIT TYPE LOCKWASHER
7	347-508	COIL SUPPORT BRACKET
8	FJ-26-1200	COIL COMPLETE
9	130-805	SOLENOID TUBING
10		#6-32 x 3/8 LG. SEMS UNIT
11	347-2512-A	PLUNGER STOP ASS'Y
12	347-506	COIL MTG. BRACKET
13		#6-32 HEX NUT
14		#6-32 x 1/4 LG. SEMS UNIT
15	209-901	SPRING
16	91-905	SPRING CLIP
17	295-2510-A	BALL KICKER ARM ASS'Y
18	304-2501	KICKER ARM, BRACKET ASS'Y
19	295-2513	PLUNGER & LINK ASS'Y
20	#6722-X21	RETAINING RING

CHICAGO DYNAMIC INDUSTRIES

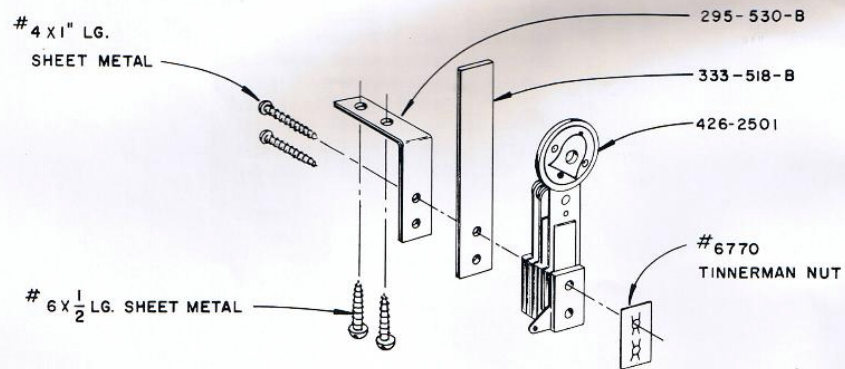
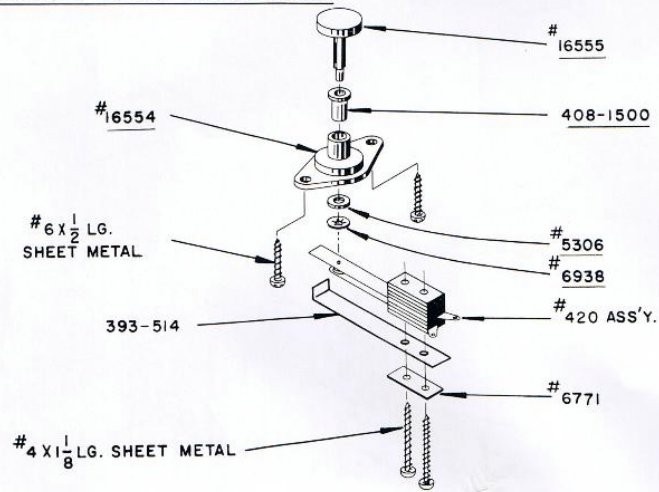
PARTS CATALOG

PAGE 11

ROLL OVER BUTTON & TARGET SWITCH ASSEMBLY

408-2502

COMPLETE (INCLUDES 5 ITEMS UNDER LINED)

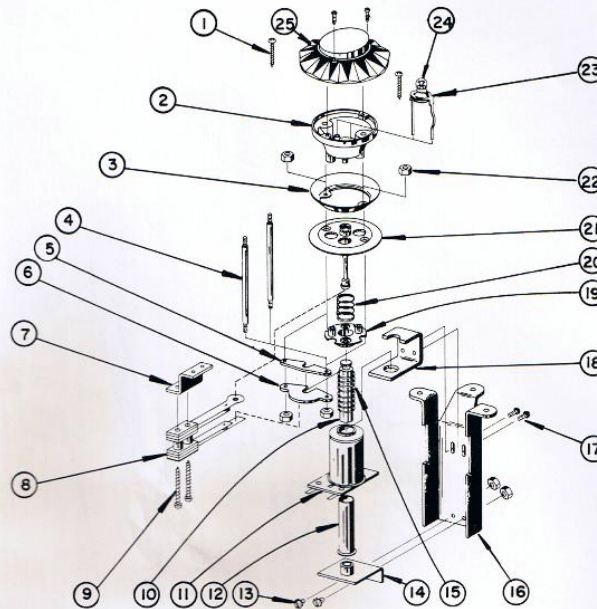


CHICAGO DYNAMIC INDUSTRIES

PARTS CATALOG

PAGE 12

THUMPER BUMPER ASSEMBLY



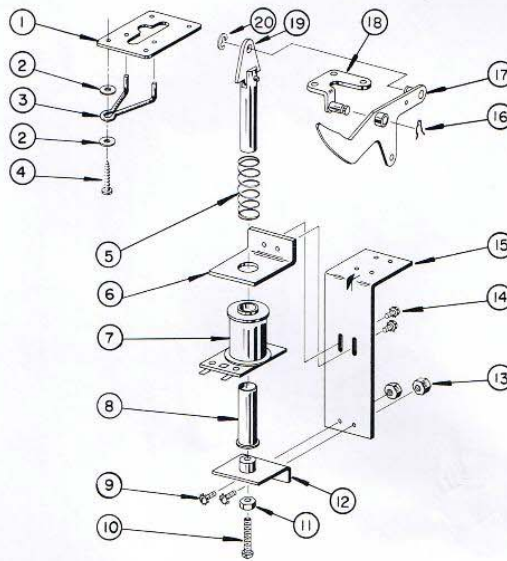
ITEM	PART NO.	DESCRIPTION	ITEM	PART NO.	DESCRIPTION
	393-2521	COMPLETE THUMPER BUMPER ASS'Y	13		#6-32 x 3/8 LG. SEMS UNIT
1		#8 x 3/4 LG. RD. PHILLIP HD. SELF TAPPING SCREW	14	347-2512	PLUNGER STOP ASS'Y
2	#16511-W	THUMPER BODY	15	209-901	SPRING
3	312-504	THUMPER RING	16	393-508	COIL MTG. BRACKET
4	231-1507	POWER BUMPER RODS	17		#6-32 x 1/4 LG. SEMS UNIT
5	119-512	FIBER PLUNGER ARM	18	119-502	COIL SUPPORT BRACKET
6	119-503	BRASS PLUNGER ARM	19	#16512	BUMPER BASE
7	231-505	CONTACT MTG. BRACKET	20	3-119	SPRING
8	#239-AR	SWITCH ASS'Y	21	#16513-Y	WAFER THUMPER
	#191-A	SWITCH ASS'Y	22		#6-32 ELASTIC STOP NUT
9		#4 S.M.S. (LENGTH AS REQUIRED)	23	#5234	SOCKET
10	119-1507	PLUNGER	24	#5104	BULB
11	FJ-22-550	COIL COMPLETE	25	#16545-A	BLUE 100 DIAMOND SUNFLOWER CAP
12	130-805	SOLENOID TUBING		#16545-B	YELLOW 100 DIAMOND SUNFLOWER CAP
				#16545-C	RED 100 DIAMOND SUNFLOWER CAP

CHICAGO DYNAMIC INDUSTRIES

PARTS CATALOG

PAGE 13

BALL KICKER UNIT



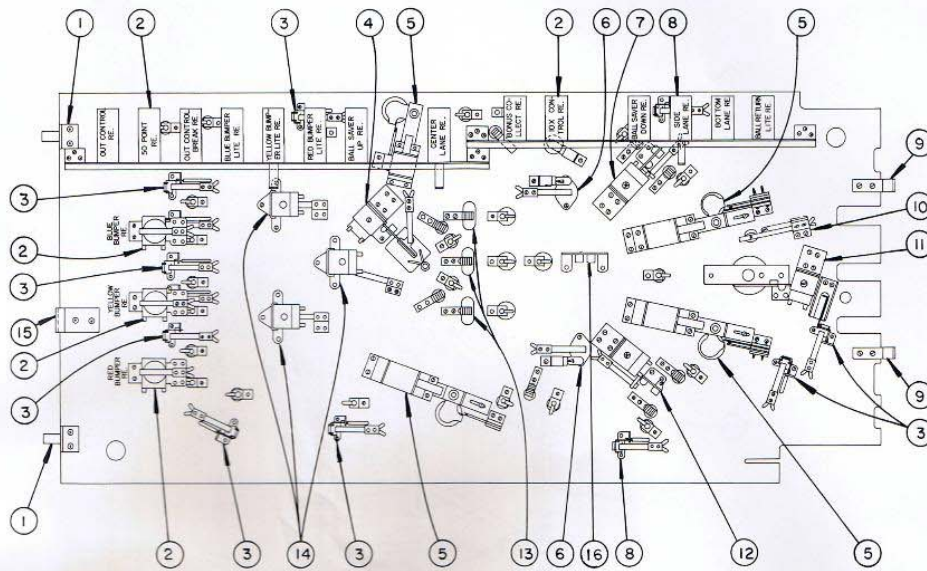
ITEM	PART NO.	DESCRIPTION
1	#16549	KICKER PAD
2	#5362	WASHER
3	393-900	BALL KICK-OUT HOLE WIRE FORM
4		#6 x 1/2" LG. RD. PHILLIP HD. S.M.S.
5	209-901	SPRING
6	347-508	COIL SUPPORT BRACKET
7	FJ-26-800	COIL COMPLETE
8	130-805	SOLENOID TUBING
9		#6-32 x 3/8" LG. SEMS UNIT
10		#10-32 x 1" LG. BRASS R.H.M.S.
11		#10-32 HEX NUT
12	124-2500	PLUNGER STOP ASS'Y
13		#6-32 HEX NUT
14		#6-32 x 1/4 LG. SEMS UNIT
15	347-506	COIL MTG. BRACKET
16	91-905	SPRING CLIP
17	295-2510	BALL KICKER ARM ASS'Y
18	295-2509	KICKER ARM BRKT. ASS'Y
19	295-2513	PLUNGER & LINK ASS'Y
20	#6722-X21	RETAINING RING

CHICAGO DYNAMIC INDUSTRIES

PARTS CATALOG

PAGE 14

UNDERSIDE OF PLAYFIELD



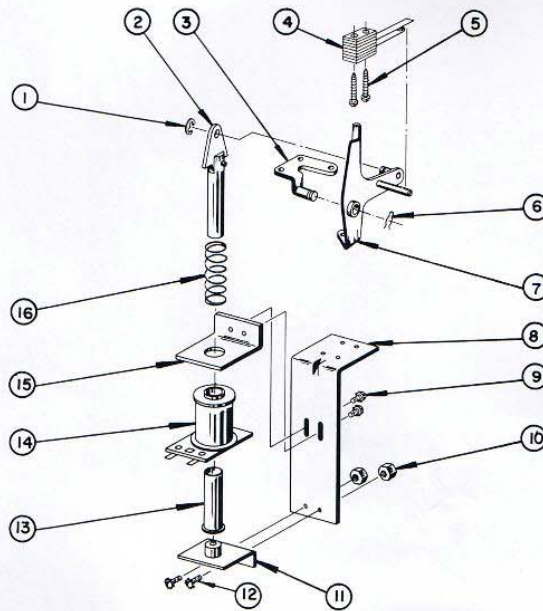
ITEM	PART NO.	DESCRIPTION
1	295-2529	PLAYFIELD LOCK ASS'Y
2		FOR ALL THESE RELAYS SEE PAGES 30 & 31
3	295-2557	ROLL OVER WIRE FORM & BRACKET ASS'Y
4		BALL KICKER UNIT (SEE PAGE 14)
5		FLIPPER ASS'Y (SEE PAGE 9)
6		ROLL OVER BUTTON ASS'Y (SEE PAGE 12)
7		ACTION KICKER ASS'Y (SEE PAGE 17)
8	347-2508	ROLL OVER WIRE FORM & BUTTON ASS'Y
9	326-525	PLAYFIELD SUPPORT BRACKET
10	339-514	TILT CONTACT BRACKET
	#302	TILT CONTACT SWITCH
11		BALL Saver UNIT (SEE PAGE 11)
12		ACTION KICKER ASS'Y (SEE PAGE 16)
13		TARGET SWITCH ASS'Y (SEE PAGE 12)
14	393-2521	THUMPER BUMPER ASS'Y (SEE PAGE 13)
15	295-586	PLAYFIELD LIMIT BRACKET
16	#5816	2 POINT STRAIGHT INLINE SOCKET

CHICAGO DYNAMIC INDUSTRIES

PARTS CATALOG

PAGE 15

ACTION KICKER

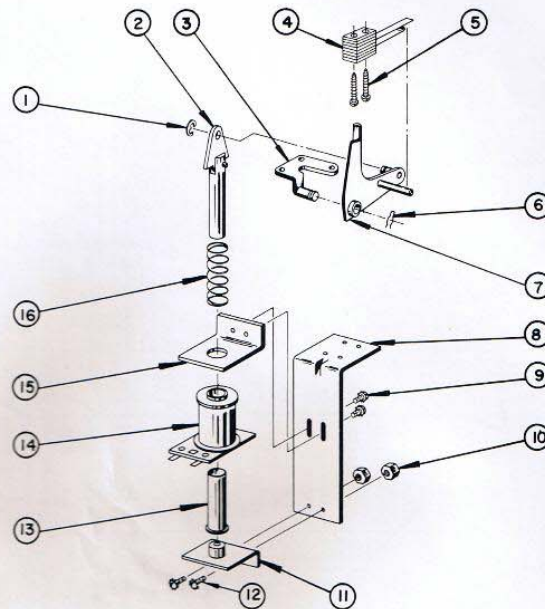


ITEM	PART NO.	DESCRIPTION
1	#6722-X21	RETAINING RING
2	295-2513	PLUNGER & LINK ASS'Y
3	295-2509	KICKER ARM BRACKET ASS'Y
4	#26	SWITCH ASS'Y
5		#4 x 1/2 LG. S.M.S.
6	91-905	SPRING CLIP
7	331-2510	KICKER ARM ASS'Y (WITH POST)
8	347-506	COIL MTG. BRACKET
9		#6-32 x 1/4 LG. SEMS UNIT
10		#6-32 HEX NUT
11	347-2512	PLUNGER STOP ASS'Y
12		#6-32 x 3/8 LG. SEMS UNIT
13	130-805	SOLENOID TUBING
14	FJ-23-750	COIL COMPLETE
15	347-508	COIL SUPPORT BRKT.
16	209-901	SPRING

CHICAGO DYNAMIC INDUSTRIES

PARTS CATALOG

PAGE 16



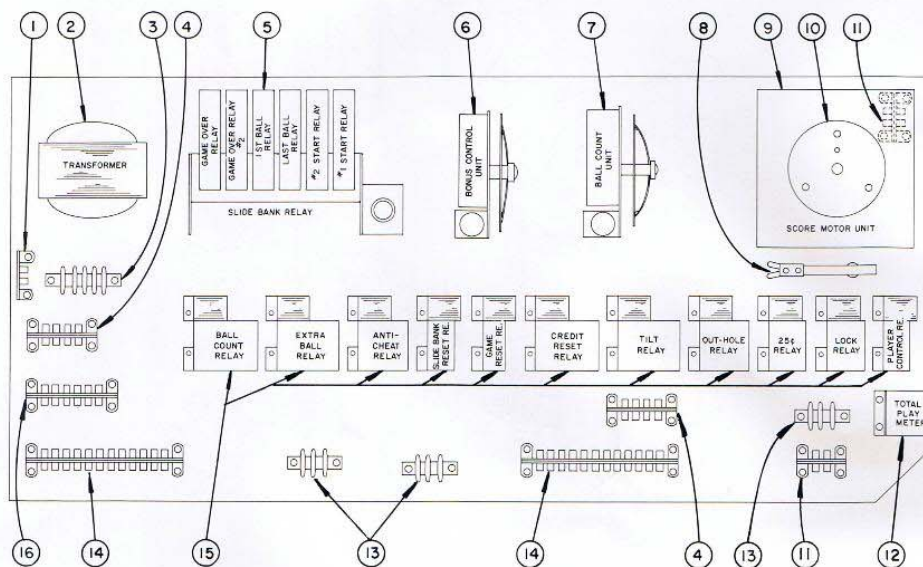
ITEM	PART NO.	DESCRIPTION
1	#6722-X21	RETAINING RING
2	295-2513	PLUNGER & LINK ASS'Y
3	295-2509	KICKER ARM BRACKET ASS'Y
4	#26	SWITCH ASS'Y
5		#4 x 1/2 LG. S.M.S.
6	91-905	SPRING CLIP
7	426-2502	KICKER ARM ASS'Y (WITH POST)
8	347-506	COIL MTG. BRACKET
9		#6-32 x 1/4 LG. SEMS UNIT
10		#6-32 HEX NUT
11	347-2512	PLUNGER STOP ASS'Y
12		#6-32 x 3/8 LG. SEMS UNIT
13	130-805	SOLENOID TUBING
14	FJ-23-750	COIL COMPLETE
15	347-508	COIL SUPPORT BRKT.
16	209-901	SPRING

CHICAGO DYNAMIC INDUSTRIES

PARTS CATALOG

PAGE 17

SUB-PANEL



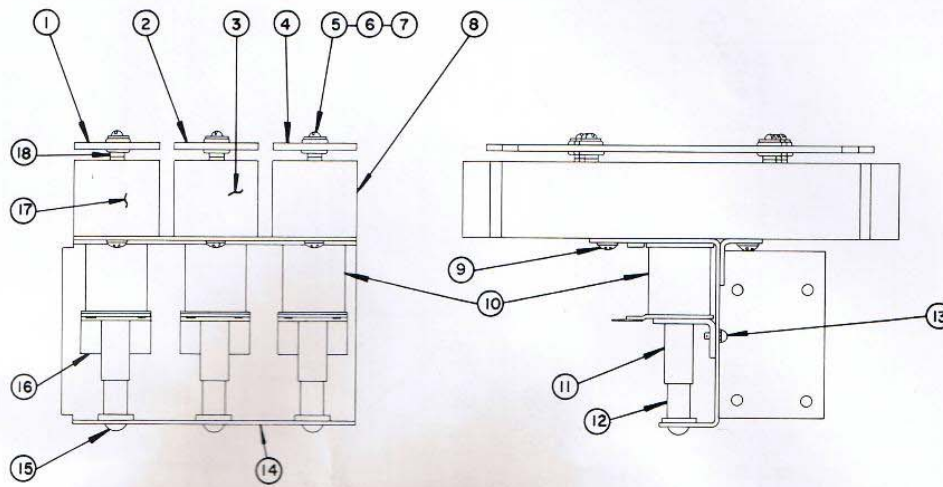
ITEM	PART NO.	DESCRIPTION
1	#5816	2 POINT STRAIGHT INLINE SOCKET
2	#5781	TRANSFORMER
3	#6685	5 PLACE TERMINAL STRIP
4	#5878	8 POINT REGULAR SOCKET
5	271-2520-R-6	SLIDE TYPE RELAY (SEE PAGE 27)
6	130-2519-B	BONUS CONTROL UNIT (SEE PAGE 22)
7	130-2568-A	BALL COUNT UNIT (SEE PAGE 26)
8	#302	TILT SWITCH
9	417-2500	SCORE MOTOR ASS'Y (COMPLETE)
10	393-2513	SCORE MOTOR CAM ASS'Y (SEE PAGE 29)
11	#5876	4 POINT REGULAR SOCKET
12	#5707	30 VOLT TOTAL PLAY METER
13	#6685-3	3 PLACE TERMINAL STRIP
14	#5885	24 POINT REGULAR SOCKET
15		FOR ALL THESE RELAYS (SEE PAGE 30)
16	#5880	12 POINT REGULAR SOCKET

CHICAGO DYNAMIC INDUSTRIES

PARTS CATALOG

PAGE 18

3 TONE CHIME ASSEMBLY



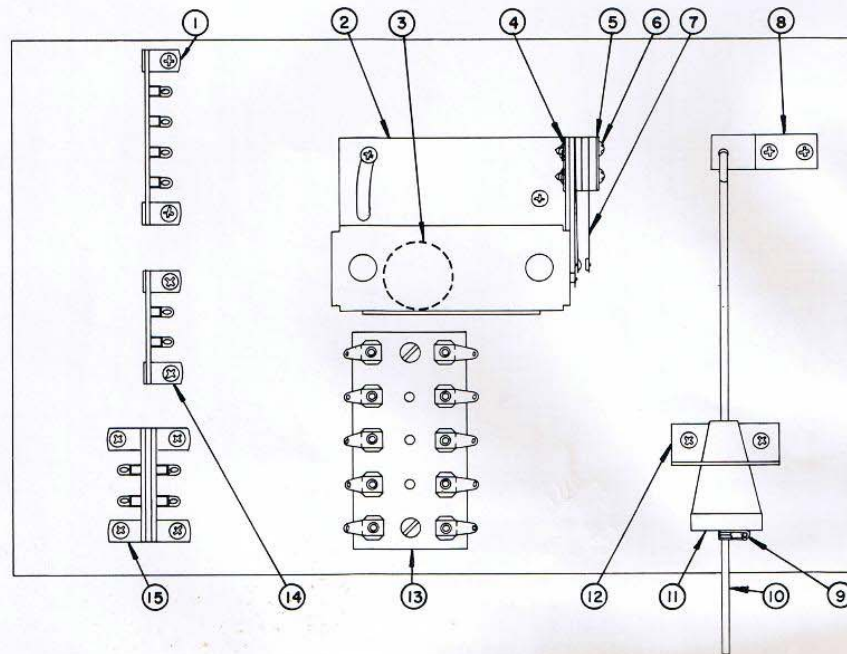
ITEM	PART NO.	DESCRIPTION
	353-2520	3 TONE CHIME ASS'Y
1	353-510-C	CHIME BAR
2	353-510-B	CHIME BAR
3	353-1025-B	CHIME BAR
4	353-510-A	CHIME BAR
5		#4 x 1" RD. HD. WOOD SCREW
6	#5392	FLAT WASHER
7	#6095	RUBBER GROMMET
8	353-1025-A	CHIME BAR
9		#10 x 3/4 LG. TYPE "A" PHILLIP HD. S.M.S.
10	N-26-1000	SOLENOID TUBE
11	167-800	SOLENOID TUBE
12	353-2519	PLUNGER ASS'Y
13		#6-32 x 1/4" LG. SEMS UNIT
14	353-2518-3	CHIME MTG. BRACKET ASS'Y
15	#6079	GROMMET
16	347-508	COIL SUPPORT BRACKET
17	353-1025-C	CHIME BAR
18	#5313	WASHER

CHICAGO DYNAMIC INDUSTRIES

PARTS CATALOG

PAGE 19

TILT & FUSE BOARD

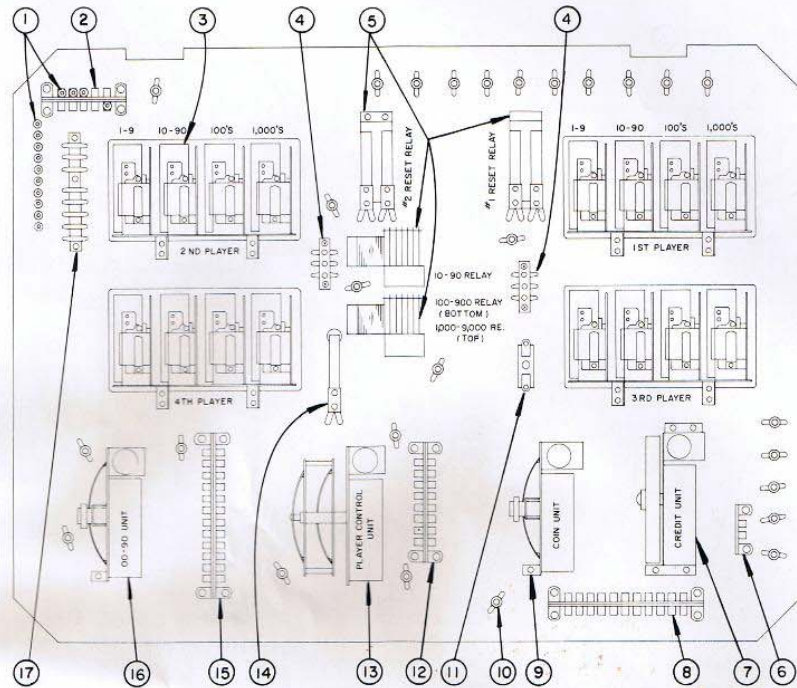


ITEM	PART NO.	DESCRIPTION
1	#5821	4 POINT STRAIGHT INLINE SOCKET
2	339-511	ELEVATOR TILT
3	#6717	1-1/16" DIA. STEEL BALL
4	#6770	TINNERMAN NUT
5	#6771	TINNERMAN SPACER
6		#4 x 5/8" LG. S.W.S.
7	#331	CONTACT SWITCH ASS'Y
	339-2513	ELEVATOR TILT ASS'Y (INCLUDES ITEMS 2 THRU 7)
8	295-557	TILT PLUMB HANGER
9	231-907	TILT PLUMB SPRING
10	295-906	TILT PLUMB WIRE
11	295-1513	TILT PLUMB
12	295-556	TILT PLUMB CONTACT PLATE
13	#5447-5	5 PLACE FUSE CLIP ASS'Y
	#5713	10 AMP FUSE (3-REQ'D)
	#5714	15 AMP FUSE
	#5746	1 AMP SLO-BLO FUSE
14	#5816	2 POINT STRAIGHT INLINE SOCKET
15	#5876	4 POINT REGULAR SOCKET

CHICAGO DYNAMIC INDUSTRIES

PARTS CATALOG

PAGE 20



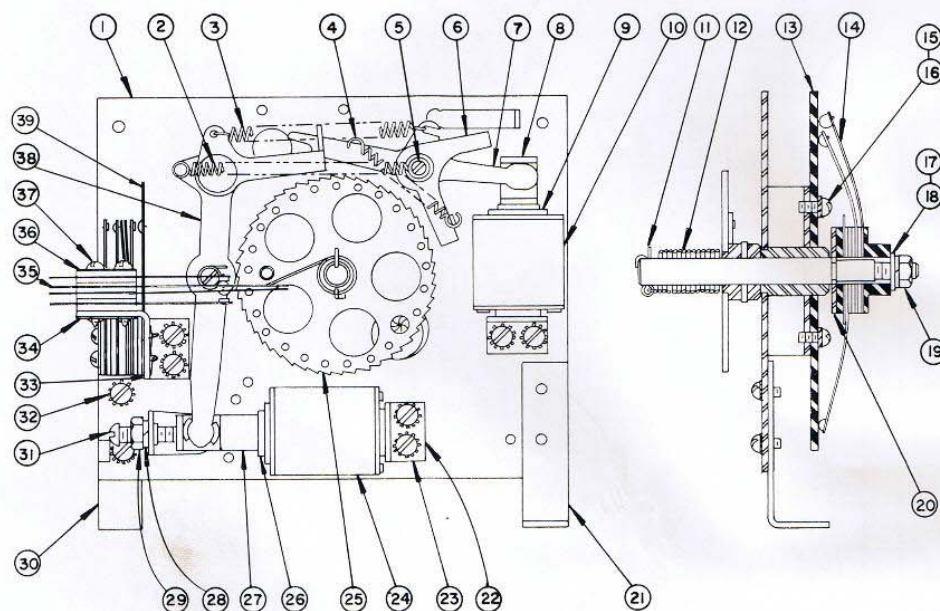
ITEM	PART NO.	DESCRIPTION
1	#5899	BANANA PLUGS
2	#5879	10 POINT REGULAR SOCKET
3		SCORING DRUM UNITS (SEE PAGE 28)
4	#6685-3	3 PLACE TERMINAL STRIP
5		FOR ALL THESE RELAYS SEE PAGE 30
6	#5816	2 POINT STRAIGHT INLINE SOCKET
7	130-2532-C	CREDIT UNIT (SEE PAGE 25)
8	#5886	22 POINT REGULAR SOCKET
9	130-2568-A	COIN UNIT (SEE PAGE 26)
10	#5232	BAYONET SOCKET
	#5112	BULB
11	#5741-1	1 PLACE FUSE HOLDER
	#5775	2-8/10 SLO-BLO FUSE
12	#5881	14 POINT REGULAR SOCKET
13	130-2565	PLAYER CONTROL UNIT (SEE PAGE 24)
14	#70	TILT SWITCH
15	#5885	24 POINT REGULAR SOCKET
16	130-2571-A	00-90 UNIT (SEE PAGE 23)
17	#6685-5	5 PLACE TERMINAL STRIP
	#6685-3	3 PLACE TERMINAL STRIP

CHICAGO DYNAMIC INDUSTRIES

PARTS CATALOG

PAGE 21

BONUS CONTROL UNIT

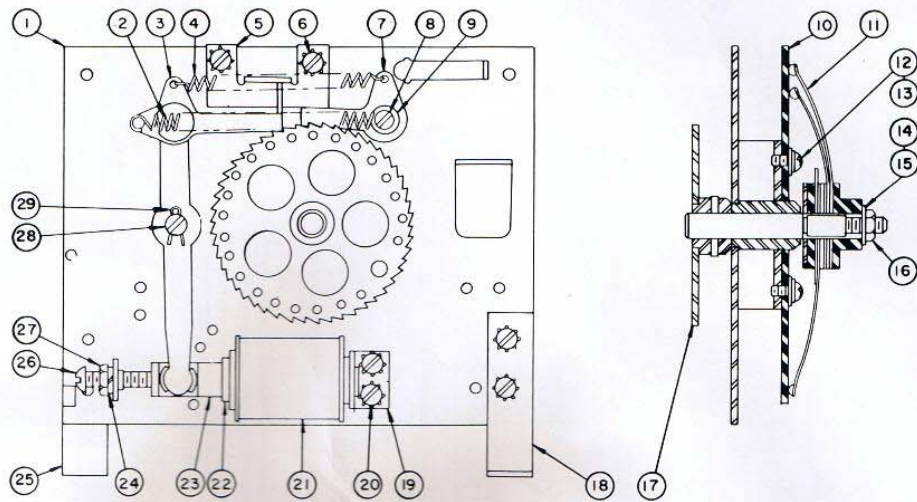


ITEM	PART NO.	DESCRIPTION	ITEM	PART NO.	DESCRIPTION
	130-2519-B	COMPLETE BONUS UNIT (5 STEP)	20	130-518	CONTACT WASHER
1	130-2505	MTG. PLATE, BRKT. & BUSHING ASS'Y	21	130-560-AS	MOUNTING LEG
2	130-910-18	SPRING	22	130-2516	PLUNGER STOP ASS'Y
3	130-901	SPRING	23		#6-32 x 1/4 SEMS
4	130-900	SPRING	24	J-22-550	COIL COMPLETE
5	130-1510	RESET ARM POST	25	130-2524	SHAFT, BUSHING, RATCHET & STUD ASS'Y
6	130-2514	ESCAPEMENT PAWL & BUSHING	26	130-2524-5	SOLENOID TUBING
7	130-2513	RESET ARM ASS'Y	27	91-1538	OPERATING PLUNGER
8	91-1507	OPERATING PLUNGER	28	#5428	SPLIT TYPE LOCKWASHER
9	130-1536	SOLENOID TUBING	29		#10-32 HEX NUT
10	H-26-650	COIL COMPLETE	30	130-560-A	MOUNTING LEG
11	#6754	COTTER PIN	31		#10-32 x 7/8 LG. BRASS R.H.M.S.
12	130-905	TORSION SPRING	32		#8-32 x 1/4 LG. SEMS
13	426-2503	CONTACT PLATE ASS'Y	33	130-511	DOUBLE CONTACT BRACKET
14	426-2504	WIPER FINGER ASS'Y	34	#6770	TINNERMAN NUT
15		#6-32 x 3/8 LG. SEMS	35	#46A	SWITCH ASS'Y
16	#5305	WASHER	36	#6771	TINNERMAN SPACER
17	#5331	WASHER	37		#4 S.M.S. (LENGTH AS REQUIRED)
18	#5429	SPLIT TYPE LOCKWASHER	38	130-2538	OPERATING ARM & POST ASS'Y
19		1/4-28 HEX NUT	39	305-A	E.O.S. SWITCH

CHICAGO DYNAMIC INDUSTRIES

PARTS CATALOG

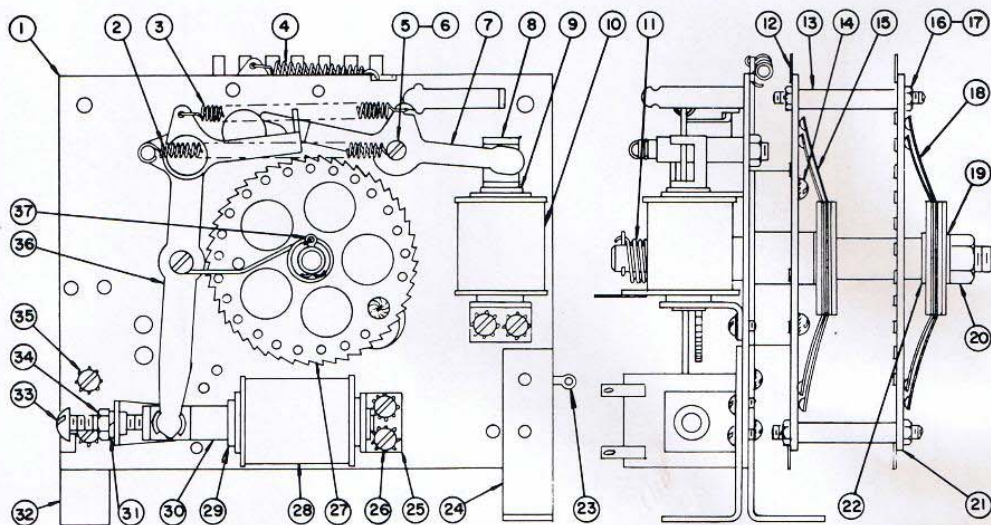
PAGE 22



ITEM	PART NO.	DESCRIPTION	ITEM	PART NO.	DESCRIPTION
	130-2571-A	COMPLETE 00-90 UNIT	15	#5429	SPLIT TYPE LOCKWASHER
1	130-2505	MTG. PLATE BRACKET & BUSHING ASS'Y	16		#1/4-28 HEX NUT
2	130-910-18	SPRING	17	130-2546	SHAFT BUSHING & RATCHET ASS'Y
3	130-2511	OPERATING ARM ASS'Y	18	130-560-AS	MOUNTING LEG
4	130-901	SPRING	19	130-2516	PLUNGER STOP ASS'Y
5	130-531	OVERRIDE RESTRAINER	20		#6-32 x 1/4 LG. SEMS
6		#6-32 x 1/4 LG. SEMS UNIT	21	J-22-550	COIL COMPLETE
7	130-2517	HOLDING PAWL & BUSHING ASS'Y	22	130-1535	SOLENOID TUBING
8	130-1510	RESET PAWL POST	23	130-1513	OPERATING PLUNGER
9	130-1517	RESET POST BUSHING	24	#5428	SPLIT TYPE LOCKWASHER
10	344-2515-A	CONTACT PLATE ASS'Y (00-90 UNIT)	25	130-560-A	MOUNTING LEG
11	344-2506	WIPER FINGER ASS'Y (00-90 UNIT)	26		#10-32 x 3/4 LG. BRASS R.H.M.S.
12		#6-32 x 3/8 LG. SEMS UNIT	27		#10-32 HEX NUT
13	#5305	FLAT WASHER	28	130-1508	OPERATING ARM POST
14	#5331	FLAT WASHER	29	143-902	SPRING CLIP

CHICAGO DYNAMIC INDUSTRIES
PARTS CATALOG

PLAYER CONTROL UNIT



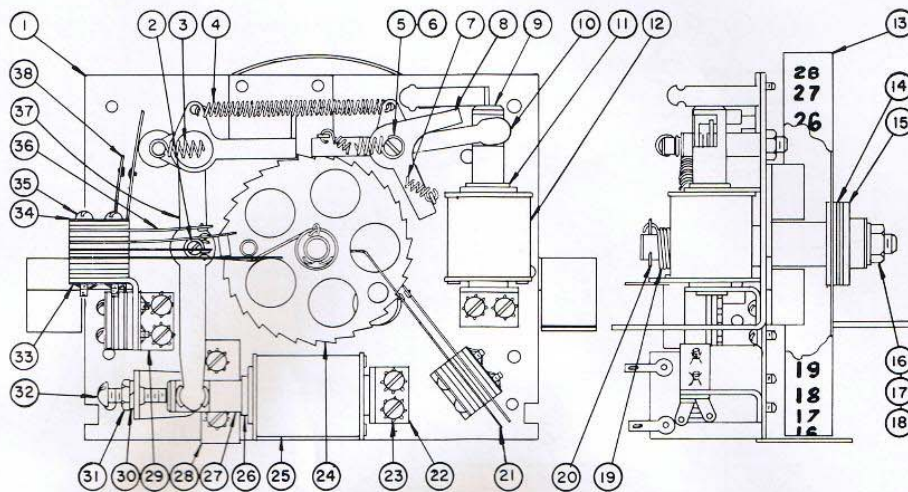
ITEM	PART NO.	DESCRIPTION	ITEM	PART NO.	DESCRIPTION
	130-2565	COMPLETE PLAYER CONTROL UNIT (3 STEP)	19	#5429	SPLIT TYPE LOCKWASHER
1	130-2502	MTG. PLATE BRACKET & BUSHING ASS'Y	20		1/4-28 HEX NUT
2	130-910-21	SPRING	21	393-2509	CONTACT PLATE ASS'Y (PLAYER CONTROL #2)
3	130-901	SPRING	22	#5338	WASHER
4	130-904	SPRING	23	#6658	SOLDERING LUG
5	130-1510	RESET ARM POST	24	130-560-AS	MOUNTING LEG
6	130-1517	RESET POST BUSHING	25	130-2516	PLUNGER STOP ASS'Y
7	130-2513	RESET ARM ASS'Y	26		#6-32 x 1/4 SEMS
8	91-1507	OPERATING PLUNGER	27	130-2562-3	DOUBLE STACK RATCHET ASS'Y
9	130-1536	SOLENOID TUBING	28	J-22-550	COIL COMPLETE
10	H-26-650	COIL COMPLETE	29	130-1535	SOLENOID TUBING
11	130-907	TORSION SPRING	30	91-1538	OPERATING PLUNGER
12	417-2504	CONTACT PLATE ASS'Y (PLAYER CONTROL #1)	31	#5428	SPLIT TYPE LOCKWASHER
13	130-1532	CONTACT PLATE STAND OFF	32	130-560-A	MOUNTING LEG
14		#6-32 x 3/8 LG. SEMS UNIT	33		#10-32 x 7/8 LG. BRASS R.H.M.S.
15	417-2503	WIPER FINGER ASS'Y (PLAYER CONTROL #1)	34		#10-32 HEX NUT
16	#5476	EXTERNAL SHAKEPROOF LOCKWASHER	35		#8-32 x 1/4 LG. SEMS UNIT
17		#6-32 HEX NUT	36	130-2538	OPERATING ARM ASS'Y
18	393-2510	WIPER FINGER ASS'Y (PLAYER CONTROL #2)	37	#6754	COTTER PIN

CHICAGO DYNAMIC INDUSTRIES

PARTS CATALOG

PAGE 24

CREDIT UNIT



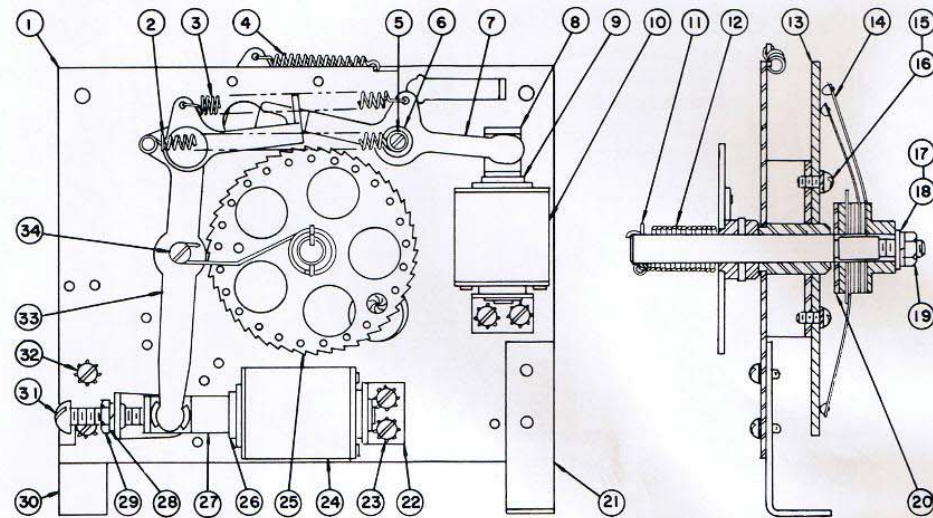
ITEM	PART NO.	DESCRIPTION	ITEM	PART NO.	DESCRIPTION
	130-2532-C	COMPLETE CREDIT UNIT	20	#6754	COTTER PIN
1	130-2583	MOUNTING PLATE ASS'Y	21	#46	SWITCH ASS'Y
2	130-1508	OPERATING ARM POST	22	130-2516	PLUNGER STOP ASS'Y
3	130-910-18	SPRING	23		#6-32 x 1/4 LG. SEMS UNIT
4	130-901	SPRING	24	130-2579	SHAFT, BUSHING, RATCHET & STUD ASS'Y
5	130-1510	RESET ARM POST	25	J-22-550	COIL (STEP-UP)
6	130-1517	RESET POST BUSHING	26	130-1535	STEP-UP SOLENOID TUBING
7	129-900	SPRING	27	130-1513	STEP-UP PLUNGER
8	130-2514	ESCAPEMENT PAWL & BUSHING	28	130-532	WINDOW BRACKET
9	130-1539	RESET PLUNGER	29	130-511	DOUBLE CONTACT BRACKET
10	130-2513	RESET ARM ASS'Y	30	#5428	LOCKWASHER
11	130-1536	RESET SOLENOID TUBING	31		#10-32, HEX NUT
12	H-26-650	COIL RESET	32		#10-32 x 3/4 LG. BRASS R.H.M.S.
13	130-2552	DRUM ASS'Y	33	#6770	TINNERMAN NUT
14	130-518	WASHER	34	#6771	TINNERMAN SPACER
15	130-806	FINGER HUB	35		#4 S.M.S. LENGTH AS REQUIRED
16		1/4-28 HEX NUT	36	#128-80	SWITCH ASS'Y
17	#5429	LOCKWASHER	37	130-2533	OPERATING ARM & POST ASS'Y
18	#5331	PLAIN WASHER	38	#108	SWITCH ASS'Y
19	130-907	TORSION SPRING			

CHICAGO DYNAMIC INDUSTRIES

PARTS CATALOG

PAGE 25

COIN & BALL COUNT UNIT



ITEM	PART NO.	DESCRIPTION	ITEM	PART NO.	DESCRIPTION
	130-2568-A	COMPLETE COIN UNIT (3 STEP)	18	#5429	SPLIT TYPE LOCKWASHER
	130-2568-A	COMPLETE BALL COUNT UNIT (5 STEP)	19		#1/4-28 HEX NUT
1	130-2502	MTG. PLATE, BRKT. & BUSHING ASS'Y	20	130-518	CONTACT WASHER
2	130-910-18	SPRING	21	130-560-AS	MOUNTING LEG
3	130-901	SPRING	22	130-2516	PLUNGER STOP ASS'Y
4	130-904	SPRING	23		#6-32 x 1/4 SEMS
5	130-1510	RESET ARM POST	24	J-22-550	COIL COMPLETE
6	130-1517	RESET POST BUSHING	25	130-2524-3	3 STEP SHAFT, BUSHING, RATCHET & STUD ASS'Y (COIN UNIT)
7	130-2513	RESET ARM ASS'Y		130-2524-5	5 STEP SHAFT, BUSHING, RATCHET & STUD ASS'Y (BALL COUNT UNIT)
8	91-1507	OPERATING PLUNGER	26	130-1535	SOLENOID TUBE
9	91-1509	SOLENOID TUBING	27	91-1538	OPERATING PLUNGER
10	H-26-650	COIL COMPLETE	28	#5428	SPLIT TYPE LOCKWASHER
11	#6754	COTTER PIN	29		#10-32 HEX NUT
12	130-905	TORSION SPRING	30	130-560-A	MOUNTING LEG
13	374-2501	CONTACT PLATE ASS'Y (COIN UNIT)	31		#10-32 x 3/4 LG. BRASS R.H.M.S.
	347-2513	CONTACT PLATE ASS'Y (BALL COUNT UNIT)	32		#8-32 x 1/4 SEMS
14	374-2502	WIPER FINGER ASS'Y (COIN UNIT)	33	130-2838	OPERATING ARM & POST ASS'Y
	308-2505	WIPER FINGER ASS'Y (BALL COUNT UNIT)	34	130-1508	OPERATING ARM POST
15		#6-32 x 3/8 LG. SEMS			
16	#5303	WASHER			
17	#5331	FLAT WASHER			

CHICAGO DYNAMIC INDUSTRIES

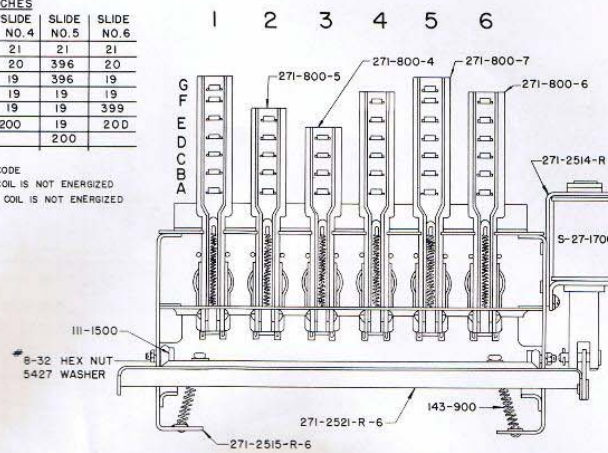
PARTS CATALOG

PAGE 26

SLIDE TYPE RELAY

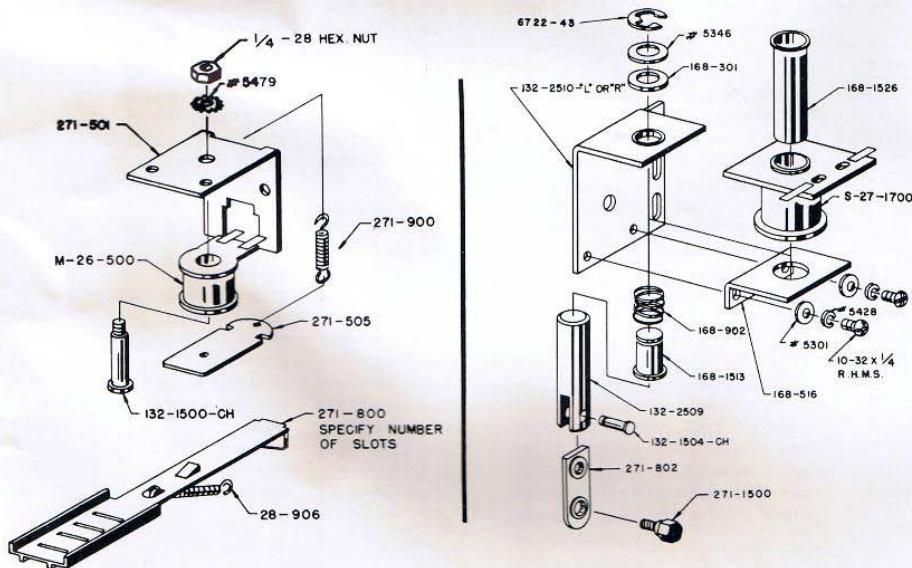
CONTACT SWITCHES						
	SLIDE NO.1	SLIDE NO.2	SLIDE NO.3	SLIDE NO.4	SLIDE NO.5	SLIDE NO.6
A	21	21	21	21	21	21
B	396	20	19	20	396	20
C	396	19	19	19	396	19
D	20	19	214	19	19	19
E	22	19C		19	19	399
F	22			200	19	200
G	200					

CONTACT SWITCH CODE
M-CONTACT IS OPEN WHEN COIL IS NOT ENERGIZED.
B-CONTACT IS CLOSED WHEN COIL IS NOT ENERGIZED
T-TRIPLE CONTACT



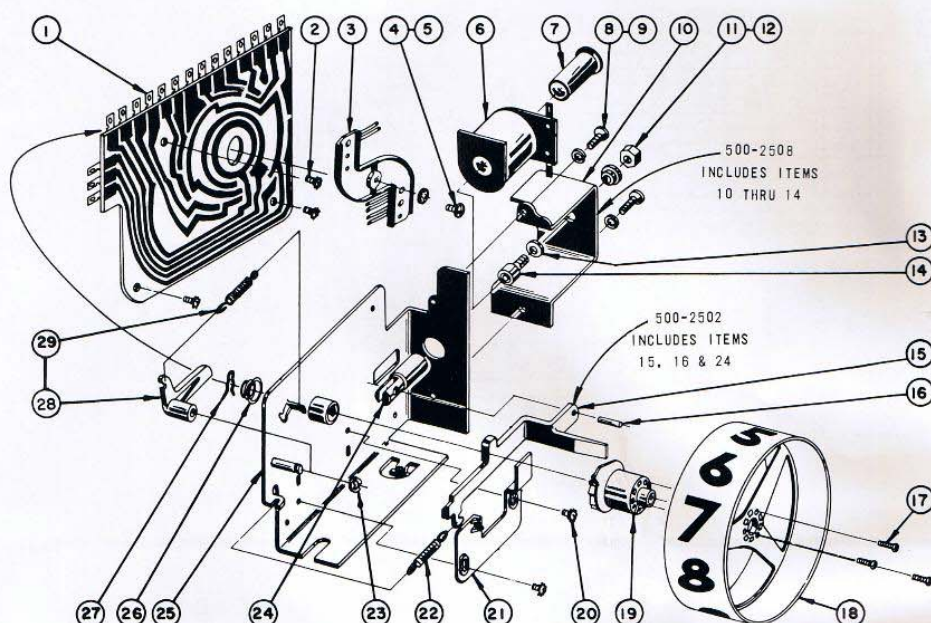
COMPLETE SLIDE TYPE RELAY 393-271-2520-R-6

SLIDE TYPE RELAY



CHICAGO DYNAMIC INDUSTRIES
PARTS CATALOG

SCORING DRUM UNIT



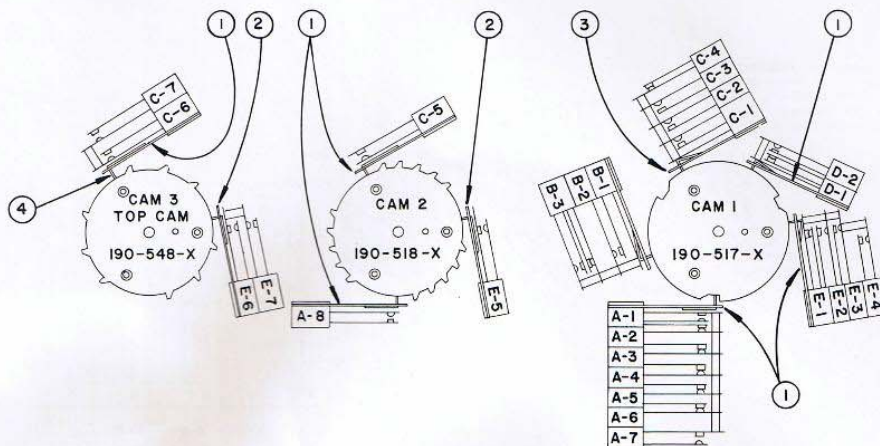
ITEM	PART NO.	DESCRIPTION	ITEM	PART NO.	DESCRIPTION
	500-2565-A	10,000's SCORING DRUM UNIT (WITHOUT END OF STROKE SWITCH) (4-REQ'D.)	12	500-1501	PLUNGER STOP BUSHING
	500-2565-D	ALL 0-9, 10-90 & 100-900 UNITS EXCEPT 1st. PLAYERS 10-90 (WITH #260 END OF STROKE SWITCH) (11-REQ'D.)	13	#5322	BRASS WASHER
	500-2565-E	ONLY 1st. PLAYERS 10-90 UNIT (WITH #263 END OF STROKE SWITCH)	14	500-2507	PLUNGER STOP & SLUG ASS'Y
1	500-2520	CONTACT PLATE ASS'Y	15	500-802-A	OPERATING ARM
2		#6-32 x 1/4 LG. SEMS UNIT	16	#6704-6	ROLL PIN
3	500-2521	WIPER FINGER ASS'Y	17		#4 x 3/8 LG. TYPE "Z" PHILLIP HD. SELF TAPPING SCREW
4		#6-32 x 3/8 LG. TYPE "F" PHILLIP HD. SELF TAPPING SCREW	18	500-800-WB	DRUM
5	#5476	SHAKEPROOF LOCKWASHER	19	500-801	CAM & RATCHET
6	N-24-700X	COIL COMPLETE	20		#6-32 x 3/16 LG. SEMS UNIT
7	143-808	PLASTIC TUBING	21	500-805	ADJUSTABLE STOP
8		#8-32 x 3/8 LG. TYPE "F" PHILLIP HD. SELF TAPPING SCREW	22	300-901-A	SPRING
9	#5427	SPLIT LOCKWASHER	23	#6722-18	E RING .187
10	500-501	COIL MTG. BRACKET	24	300-1500	OPERATING PLUNGER
11		#10-32 ELASTIC STOP NUT	25	500-2501-B	MOUNTING PLATE SUB ASS'Y
			26	300-903	SPRING
			27	300-902	RETAINING SPRING
			28	500-804	HOLDING PAWL
			29	130-904	SPRING

CHICAGO DYNAMIC INDUSTRIES

PARTS CATALOG

PAGE 28

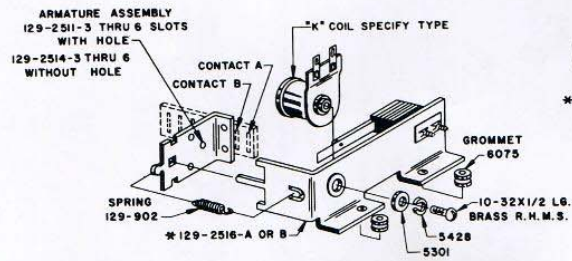
SCORE MOTOR CAMS



ITEM	PART NO.	DESCRIPTION
	393-2513	SCORE MOTOR CAM ASSEMBLY
	#5750-1959	SCORE MOTOR (60 Hz 22 R.P.M.)
	#5750-1960	SCORE MOTOR (50 Hz 22 R.P.M.)
1	115-501-F	CAM RIDER PLATE
2	115-501-P	CAM RIDER PLATE
3	115-501-A	CAM RIDER PLATE
4	115-508	CAM RIDER ALL THE SWITCHES
A-1	#63	SWITCH ASSEMBLY
A-2	#57	SWITCH ASSEMBLY
A-3	#57	SWITCH ASSEMBLY
A-4	#57	SWITCH ASSEMBLY
A-5	#57	SWITCH ASSEMBLY
A-6	#57	SWITCH ASSEMBLY
A-7	#98	SWITCH ASSEMBLY
A-8	#17	SWITCH ASSEMBLY
B-1	#62	SWITCH ASSEMBLY
B-2	#98	SWITCH ASSEMBLY
B-3	#57	SWITCH ASSEMBLY
C-1	#60	SWITCH ASSEMBLY
C-2	#325	SWITCH ASSEMBLY
C-3	#64	SWITCH ASSEMBLY
C-4	#98	SWITCH ASSEMBLY
C-5	#17	SWITCH ASSEMBLY
C-6	#63	SWITCH ASSEMBLY
C-7	#326	SWITCH ASSEMBLY
D-1	#17	SWITCH ASSEMBLY
D-2	#57	SWITCH ASSEMBLY
E-1	#17	SWITCH ASSEMBLY
E-2	#61A	SWITCH ASSEMBLY
E-3	#57	SWITCH ASSEMBLY
E-4	#430	SWITCH ASSEMBLY
E-5	#17	SWITCH ASSEMBLY
E-6	#17	SWITCH ASSEMBLY
E-7	#326	SWITCH ASSEMBLY

CHICAGO DYNAMIC INDUSTRIES
PARTS CATALOG

OPERATING RELAYS



CONTACT SWITCH CODE
M-CONTACT OPEN WHEN COIL IS NOT ENERGIZED
B-CONTACT CLOSED WHEN COIL IS NOT ENERGIZED
T-TRIPLE CONTACT

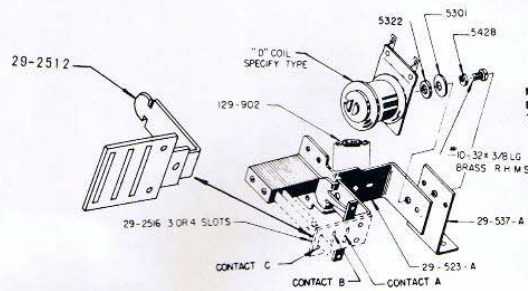
* 129-2516-A FRAME ASSEMBLY WITH HOLES
FOR GROMMETS
129-2516-B FRAME ASSEMBLY WITH HOLES
FOR SCREWS

RELAY NAME	COIL	129-2511-3 THRU 5 SLOTS ARMATURE	CONTACT SWITCHES					
			A	B	C	D	E	F
ANTI-CHEAT RE.	K-28-1100	4 SLOTS	M-27	M-26	B-26	B-26		
BALL COUNT RE.	K-28-1100	4 SLOTS	M-27	M-26	M-26	M-26		
BALL RETURN LITE RE.	K-28-1400-B	3 SLOTS	M-27					
BALL SAVER DOWN RE.	K-28-1200-B	3 SLOTS	M-27	B-26				
BALL SAVER UP RE.	K-28-1200-B	3 SLOTS	M-27	M-26	M-26			
BLUE BUMPER LITE RE.	K-28-1100-B	5 SLOTS	M-27	M-26	M-34	M-26	T-31	B-26
BONUS COLLECT RE.	K-28-1100-B	3 SLOTS	M-27	M-26	M-26			
BOTTOM LANE RE.	K-28-1200-B	3 SLOTS	M-27	M-26				
CENTER LANE RE.	K-28-1200-B	3 SLOTS	M-27	M-26	M-26			
CREDIT RESET RE.	K-28-1200	4 SLOTS	M-27	M-26	M-26	M-26		
EXTRA BALL RE.	K-28-1200	4 SLOTS	M-27	M-26	B-26	B-26		
GAME RESET RE.	K-28-1200	3 SLOTS	M-27					
LOCK RE.	K-29-1600	3 SLOTS	M-48	M-48	B-26			
OUT CONTROL BREAK RE.	K-28-1100-B	4 SLOTS	M-27	M-26	B-26	B-26		
OUT CONTROL RE.	K-28-1100-B	5 SLOTS	M-27	M-26	M-26	B-26	B-26	
OUT HOLE RE.	K-28-1100	5 SLOTS	M-27	T-31	M-26	M-26	B-26	
PLAYER CONTROL RE.	K-28-1200	3 SLOTS	M-27	T-31				
RED BUMPER LITE RE.	K-28-1100-B	5 SLOTS	M-27	M-26	M-34	M-26	T-31	
SIDE LANE RE.	K-28-1200-B	3 SLOTS	M-27	M-26				
SLIDE BANK RESET RE.	K-28-1200	3 SLOTS	M-27	M-48				
TIPT RE.	K-28-1200	5 SLOTS	M-27	M-26	M-34	M-26	M-26	
YELLOW BUMPER LITE SW.	K-28-1100-B	5 SLOTS	M-27	M-26	M-34	M-26	T-31	B-26
10X CONTROL RE.	K-28-1200-B	3 SLOTS	M-27	M-26	T-31			
25¢ RELAY	K-28-1200	3 SLOTS	M-27	M-26	T-31			
500 POINT RE.	K-28-1100-B	5 SLOTS	M-27	M-26	M-26	M-26	B-26	

CHICAGO DYNAMIC INDUSTRIES

PARTS CATALOG

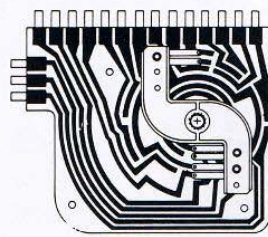
PAGE 30



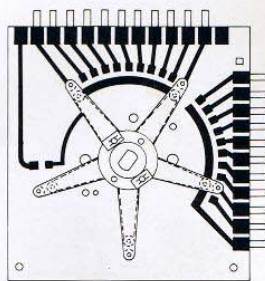
CONTACT SWITCH CODE
M-CONTACT OPEN WHEN COIL IS NOT ENERGIZED
B-CONTACT CLOSED WHEN COIL IS NOT ENERGIZED
T-TRIPLE CONTACT

RELAY NAME	COIL	SINGLE SLOT 29-2516-2 TO 5	DOUBLE SLOT 29-2512-3	CONTACT SWITCHES				
				A	B	C	D	E
RED & BLUE BUMPER RE.	D-27-1000	3 SLOTS		M-27	M-28	M-28		
YELLOW BUMPER RE.	D-27-1000	4 SLOTS		M-27	M-28	M-28	M-28	
10-90 RE.	D-27-1000	4 SLOTS		M-28	M-28	M-28	M-28	
100-900 RE.	D-27-1000	4 SLOTS		M-28	M-28	M-28	M-28	
1000-9000 RE.	D-27-1000	4 SLOTS		M-28	M-28	M-28	M-28	
#1 SCORE RESET RE.	D-26-800		3 SLOTS	ALL CONTACT SWITCHES M-28				
#2 SCORE RESET RE.	D-26-800		3 SLOTS	ALL CONTACT SWITCHES M-28				

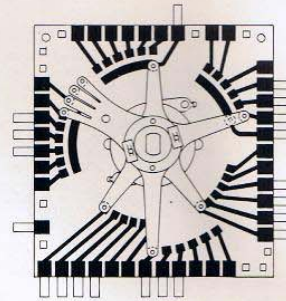
CHICAGO DYNAMIC INDUSTRIES
PARTS CATALOG



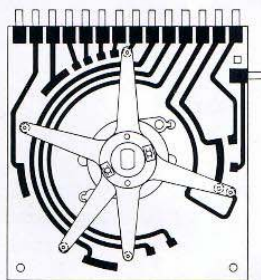
COUNTER SWITCH
PLATE 500-2520
FINGER 500-2519



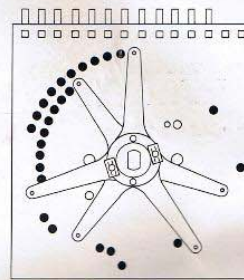
00-90 UNIT
PLATE 344-2515-A
FINGER 344-2506



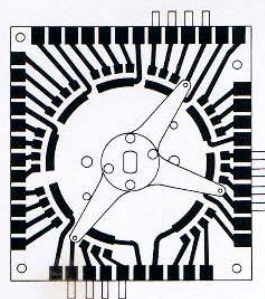
COIN UNIT
PLATE 374-2501
FINGER 374-2502



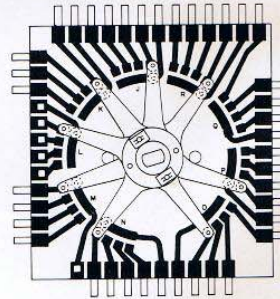
BALL COUNT UNIT
PLATE 347-2513
FINGER 308-2505



BONUS CONTROL UNIT
PLATE 426-2503
FINGER 426-2504



PLAYER CONTROL UNIT NO. 1
PLATE NO. 1 417-2504
FINGER NO. 1 417-2503



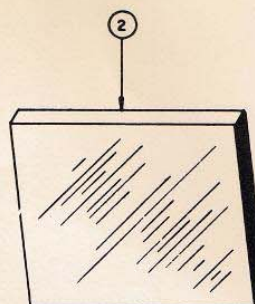
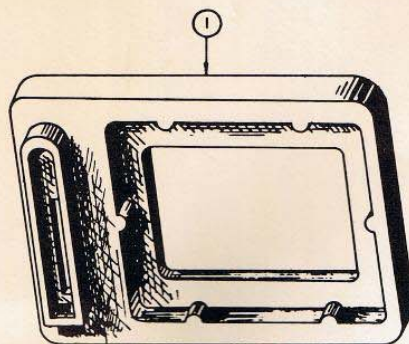
PLAYER CONTROL NO. 2
PLATE NO. 2 393-2509
FINGER NO. 2 393-2510

CHICAGO DYNAMIC INDUSTRIES

PARTS CATALOG

PAGE 32

COIN ENTRY MOLDING



ITEM	PART NO.	DESCRIPTION
1	382-800-A	5¢ COIN ENTRY MOLDING
	382-800-B	10¢ COIN ENTRY MOLDING
	382-800-C	25¢ COIN ENTRY MOLDING
	382-800-F	FOREIGN COIN ENTRY MOLDING (SPECIFY COIN OPENING)
2	326-305-A	COIN DENOMINATION WINDOWS (2 NICKELS - 1 PLAY)
	326-305-B	(10¢ - 1 PLAY)
	326-305-C	(25¢ - 3 PLAYS)
	326-305-D	(5¢ - 1 PLAY)
	326-305-E	(25¢ - 5 PLAYS)
	326-305-F	(25¢ - 6 PLAYS)
	326-305-G	(10¢ - 2 PLAYS)
	326-305-H	(3 NICKELS - 1 PLAY)
	326-305-J	(1 DIME & 1 NICKEL - 1 PLAY)
	326-305-K	(1 QUARTER - 2 PLAYS)
	326-305-L	(25¢ - 2 PLAYERS)
	326-305-M	(2 DIMES - 2 PLAYERS)
	326-305-N	(10¢ - 2 PLAYERS)
	326-305-O	(10¢ - 1 PERIOD)
	326-305-P	(25¢ - 3 PERIODS)
	326-305-Q	(25¢ - 1 PLAY)
	326-305-R	(25¢)
	326-305-S	(25¢ - 4 PLAYS)
	326-305-T	(1 QUARTER - 1 PLAY)
	326-305-U	(A GAME OF SKILL)
	326-305-V	(1 QUARTER EACH PLAYER)
	326-305-W	(1 DIME EACH PLAYER)
	326-306-A	(2 x 10 PFENNING - 1 PLAY) (GERMAN)
	326-306-B	(50 PFENNING - 3 PLAYS) (GERMAN)
	326-306-C	(1 D.M. - 6 PLAYS) (GERMAN)
	326-307-A	(50 LIRE - 1 PLAY) (ITALY)
	326-307-B	(100 LIRE - 2 PLAYS) (ITALY)
	326-308-A	(2 x 25 ORE - 1 PLAY) (SWEDISH)

ITEM	PART NO.	DESCRIPTION
	326-308-A	(2 x 25 ORE - 1 PLAY) (SWEDISH)
	326-308-B	(1 KRONE - 3 PLAYS) (SWEDISH)
	326-308-C	(50 ORE - 1 PLAY) (SWEDISH)
	326-309-A	(2 x 10 YEN - 1 PLAY) (JAPANESE)
	326-309-B	(50 YEN - 3 PLAYS) (JAPANESE)
	326-309-C	(50 YEN - 1 PLAY) (JAPANESE)
	326-309-D	(100 YEN - 3 PLAYS) (JAPANESE)
	326-310-A	(1/2 FRANC - 1 PLAY) (FRENCH)
	326-310-B	(1 FRANC - 3 PLAYS) (FRENCH)
	326-310-C	(1 FRANC - 4 PLAYS) (FRENCH)
	326-310-D	(1 FRANC - 1 PLAY) (FRENCH)
	326-310-E	(2-20 CENTIMES - 1 PLAY) (FRENCH)
	326-310-F	(100 FRANC - 1 PLAY) (FRENCH)
	326-310-G	(50 CENTIMES - 1 PLAY) (FRENCH)
	326-310-H	(1 FRANC - 2 PLAYS) (FRENCH)
	326-311-A	(6d - 1 PLAY) (BRITISH)
	326-311-B	(ONE SHILLING - 1 PLAY) (BRITISH)
	326-311-C	(TWO SHILLINGS - 2 PLAYS) (BRITISH)
	326-311-D	(TWO SHILLINGS - 4 PLAYS) (BRITISH)
	326-311-E	(ONE SHILLING - 3 PLAYS) (BRITISH)
	326-312-A	(1 DINAR - 2 PLAYS) (YUGOSLAVIA)
	326-312-B	(50 PARA - 1 PLAY) (YUGOSLAVIA)
	326-312-C	(1 DINAR - 1 PLAY) (YUGOSLAVIA)
	326-313-A	(1 SPEL - 25¢) (HOLLAND)
	326-313-B	(1 GULDEN) (4 SPELEN) (HOLLAND)
	326-314-A	(2 x 1 SCHILLING - 1 PLAY) (AUSTRIA)
	326-314-B	(5 SCHILLING - 3 PLAYS) (AUSTRIA)
	326-315-A	(1 KRONA - 1 PLAY) (SWEDEN)
	326-316-A	(1 MARKKA - 1 PLAY) (FINLAND)
	326-317-A	(1 ESCUDO - 1 PLAY) (PORTUGAL)
	326-318-A	(25 PIASTRES - 1 PLAY) (LEBANON)
	326-318-B	(50 PIASTRES - 2 PLAYS) (LEBANON)
	382-301-A	(1 QUARTER - 2 PLAYS)
	382-301-B	(1 QUARTER - 3 PLAYS)
	382-301-C	(1 DIME & 1 NICKEL - 1 PLAY)
	382-301-D	(3 NICKELS - 1 PLAY)
	382-301-E	(10¢ - 1 PLAY)
	382-301-F	(2 NICKELS - 1 PLAY)

CHICAGO DYNAMIC INDUSTRIES

PARTS CATALOG

PAGE 33